



4 2 2

LOT 501 Atherlow Road BEVERIDGE VIC 3753

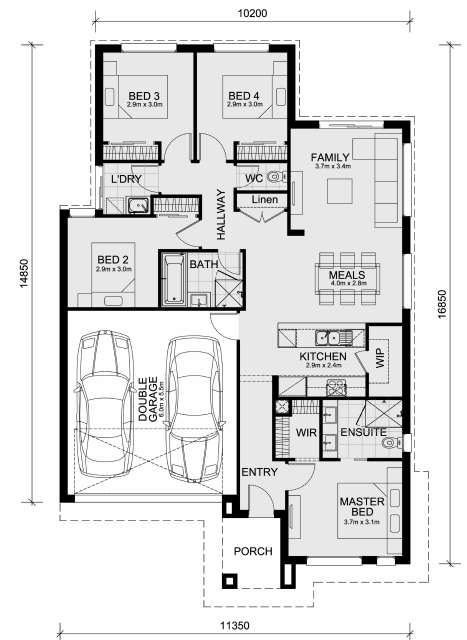
Land Size: 292 m² House Size: 167 m²

The Montrose 182 House and Land Package! CALL NITIN ON 0411493699 FOR FURTHER DETAILS!!

- Fixed Site Cost - INCLUDED
- 50-year Structural Warranty- INCLUDED
- Quality Floor Covering - INCLUDED
- 2.55m Ceiling Height - INCLUDED
- Ducted Heating & Evaporative Cooling - INCLUDED
- Double Glazing Windows - INCLUDED
- 3.5kW Solar Panels - INCLUDED
- Undermount Sink to Kitchen - INCLUDED
- 40mm Benchtop to Kitchen - INCLUDED
- 20mm Benchtops to Ensuite & Bathroom - INCLUDED
- LED Downlights to Entire Home - INCLUDED
- Dishwasher & Trim Kit Microwave- INCLUDED
- Flyscreens to all Openable Windows - INCLUDED
- Fibre Optic NBN Provision - INCLUDED

CALL NITIN ON 0411493699 FOR FURTHER DETAILS!!

All plans and facades are indicative only and may change. Mimosa Homes may amend plans, specifications, and prices without notice. Package prices are based on a standard facade, standard inclusions, and suitable land availability, excluding developer/estate requirements. Facade and...



\$532,000

Nitin Gupta

E: nitin@mimosahomes.com.au

P: 0411493699