



3 2 2

Lot 513 Herdwick Drive at Mason Quarter WOLLERT VIC 3750

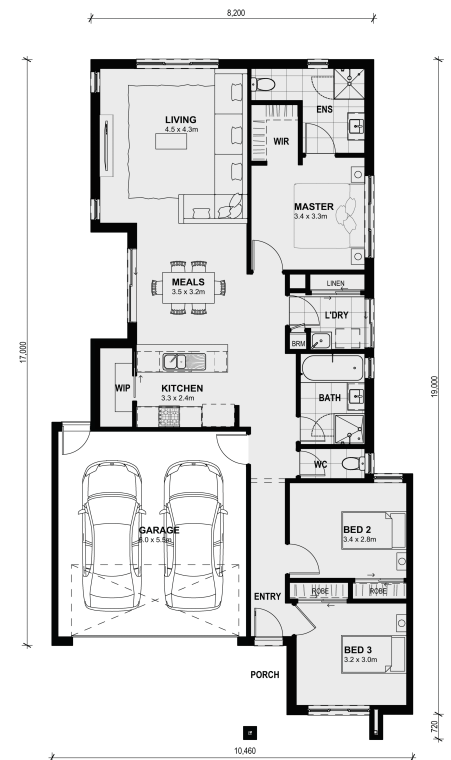
Land Size: 336 m² House Size: 165 m²

Showcasing two large bedrooms located at the front of the home, a central bathroom, kitchen with walk-in pantry, large living area and a master bedroom with a walk-in wardrobe and ensuite, make the Longwood 177 tailored to suit a modern lifestyle.

Quality inclusion:

- * Site Cost
- * Electrical Pack
- * Laminate Flooring Pack
- * Kitchen Cabinetry Pack
- * 2590mm Ceiling Height
- * Dishwasher
- * Microwave with Trim Kit
- * 20mm Stone Bench to Bathroom
- * 20mm Stone Bench to Ensuite
- * Low Profile Evaporative Cooling Unit (Single Storey)
- * Brick Infills - 2590mm Ceiling Height
- * Brick Infill Above Garage Door - 2400mm

Builder's Direct! Erick Sutedja 0416 575 858...



\$672,900

Erick Sutedja

E: erick@mimosahomes.com.au

P: 0416575858