



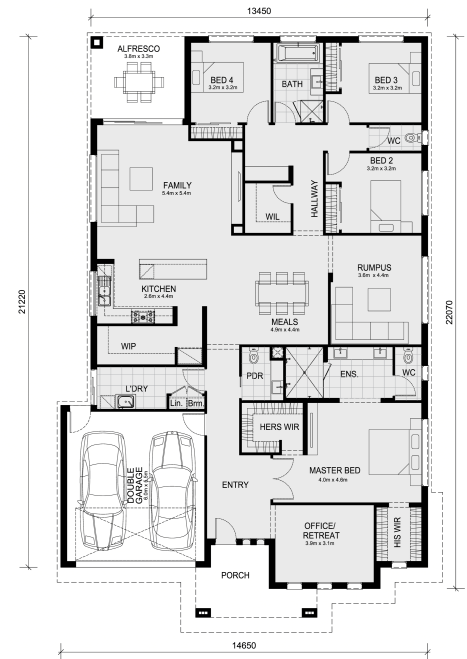
4 bedrooms, 2 bathrooms, 2 cars

## Lot 515 Firefly Street - Maple Grove Pakenham 3810 VIC

**Land Size: 512 m<sup>2</sup> House Size: 305 m<sup>2</sup>**

To inquire, contact Adam at 0439 779 909.

The Clarendon 328 and a 512 sqm lot north are located in Maple Grove, Pakenham.  
Confidence: 50-Year Mimosa Homes Structural Warranty Fixed site costs Timber-look laminate, carpet, and floor tiles High ceilings (2550 mm) Stone benchtops—Kitchen, Ensuite & Bathroom 900 mm Oven, Induction cooktop & range hood (600mm for homes under 20 sq) Microwave with trim kit & dishwasher Semi-floating vanities (double to ensuite) & tiled shower bases Quick-slide robe doors LED downlights throughout, external lights & garage strip light Internal garage access with 2 garage door remotes Fly screens on windows & obscure-glazing in the ensuite & bathroom 7-Star Energy Rating: Split-system heating/cooling and heat pump hot water unit Includes 3 Phase Power Concrete slab floor to alfresco, where applicable 3-coat paint system on the walls 2 TV points, 2 phone/data points. Towel & toilet roll holders included Termite Management System—Part A (slab), Part B (external) Occupational ...



# \$845,294

**Adam Keleher**

E: [adamk@mimosahomes.com.au](mailto:adamk@mimosahomes.com.au)

P: 0439 779 909