



## Churchill 220

4 bedrooms, 2 bathrooms, 2 car spaces

### Lot 541 Lynwood Drive BEVERIDGE VIC 3753

**Land Size: 400 m<sup>2</sup> House Size: 204 m<sup>2</sup>**

The Churchill 220 House and Land Package!

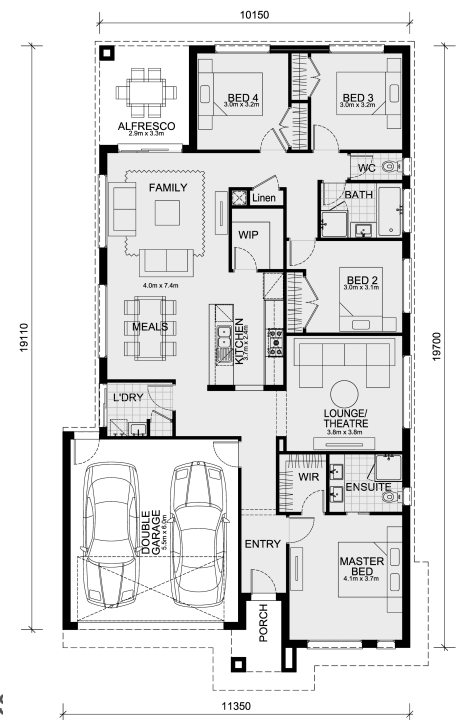
\* Experience The Mimosa Homes Difference!

\* Mimosa Homes Added Value Inclusions:

- Inclusive of site costs & connections with H1 class slab as per standard inclusions!
- Range of facades including feature render!
- Quality floor coverings throughout entire home!
- Higher ceilings 2550mm to ground floor!
- Downlights to living areas!
- Stone bench top to kitchen!
- 900mm S/S upright oven and cook top with S/S canopy rangehood!
- Stainless steel Dishwasher and Microwave with trim kit!
- Overhead cupboards & wine rack! (Design specific)
- Remote control panel sectional lift garage door!
- 6 star energy with solar hot water!
- Flexible floor plans & so much more!

**\*\*Please call - NITIN - 0411 493 699 for further details\*\***

All plans and facades are indicative concepts only and are not intended to be accurate depictions. Mimosa Homes reserves the right to amend plans specifications and price without notice. Package prices are based on a...



BRAND NEW DESIGN

# \$627,000

**Nitin Gupta**

E: [nitin@mimosahomes.com.au](mailto:nitin@mimosahomes.com.au)

P: 0411493699