



4 2 2

Lot 615 Bayberry Avenue - Verve Estate Clyde North 3978 VIC

Land Size: 350 m² House Size: 207.3 m²

Mimosa Home & Land – True Value!

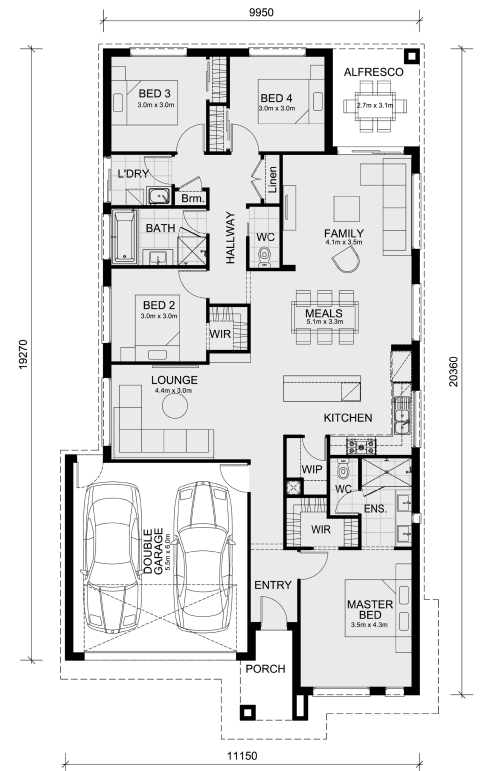
Enquire with Adam today on 0439 779 909

The Leemore 221 is packaged on a 350 m² lot facing west in Verve Estate in Clyde North.

Confidence: 50-Year Mimosa Homes Structural Warranty
Fixed site costs
A 2000-liter tank is required for lots over 300 sqm
Timber-Look Laminate, Carpet, and Floor tiles
Quick-slide robe doors
Internal garage access with 2 garage door remotes
7-star energy rating, gas heating, and a hot water unit
2 TV points, 2 phone/data points
Towel & Toilet roll holders
Termite Management System—Part A (slab), Part B (external)
BAL 12.5 if required
Recycled Water Gas connection fee
Eligible first-time home buyers can take advantage of no stamp duty and a \$10,000 government grant.

Disclaimer:

All plans & facades are provided for illustrative purposes only & are subject to change. Mimosa Homes reserves the right to modify plans, specifications & prices without prior notice. Package prices are based on a standard facade, standard inclusions & th...



\$733,215

Adam Keleher

E: adamk@mimosahomes.com.au