



V Baynton 143

3 Bedrooms 2 Bathrooms 1 Car Space

Lot 726 HOVEA CRESCENT (V COLLECTION)

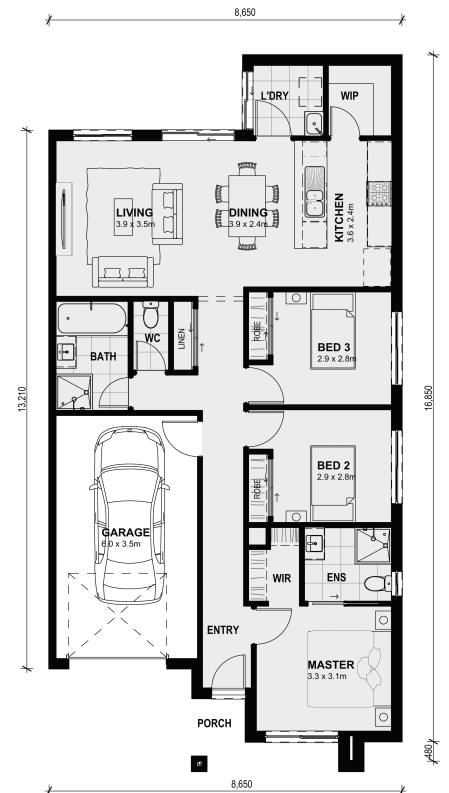
DERRIMUT VIC 3026

Land Size: House Size: 133 m²

Boasting a large master bedroom with walk-in wardrobe and ensuite located at the front of the home, internal access from the garage, two spacious bedrooms, separate w.c and an open kitchen, meals and living area, finishes off this simple, yet practical design.

All plans and facades are indicative concepts only and are not intended to be accurate depictions. Mimosa Homes reserves the right to amend plans specifications and price without notice. Package prices are based on a standard façade, standard inclusions, the availability of suitable land for development and does not include developer/estate requirements. Façade and inclusion images shown may not be standard and may not be included in the price of the home. All dimensions are approximate. Package prices do not include landscaping, fencing, decking, planter boxes, driveways and paths unless specified.

...



\$512,750

Maulik Patel

E: maulik@mimosahomes.com.au

P: 0430884855