



V Epsom 240

4  3  2 

Lot 807 #39 Thicket Loop - 5 Farms Estate CLYDE NORTH VIC 3978

Land Size: 293 m² House Size: 222 m²

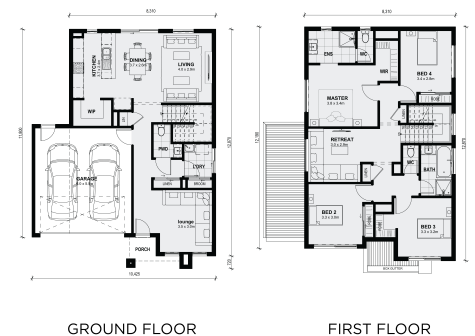
Titled site, Double Story under \$700,000

Purchase now & get your rent or mortgage paid during construction. T's & C's apply

Contact builder direct for details; Chris 0435 081 699

Dedicated to rest and relaxation the Epsom features four bedrooms all located on the first floor and is accompanied by a retreat and shared bathroom. On the ground floor, the highlight is the large open kitchen, meals and dining area that also has a large walk-in wardrobe, powder room, walk-in linen and a separate front lounge as the perfect sanctuary.

All plans and facades are indicative concepts only and are not intended to be accurate depictions. Mimosa Homes reserves the right to amend plans specifications and price without notice. Package prices are based on a standard facade, standard inclusions, the availability of suitable land for development and does not include developer/estate requirements. Facade and inclusion images shown may not be standard and may not be included in the price of the ...



\$688,835

Chris Prystupa

E: chris@mimosahomes.com.au

P: 0435081699