



Leemore 221

4  2  2 

Lot 831 Alamora Estate TARNEIT VIC 3029

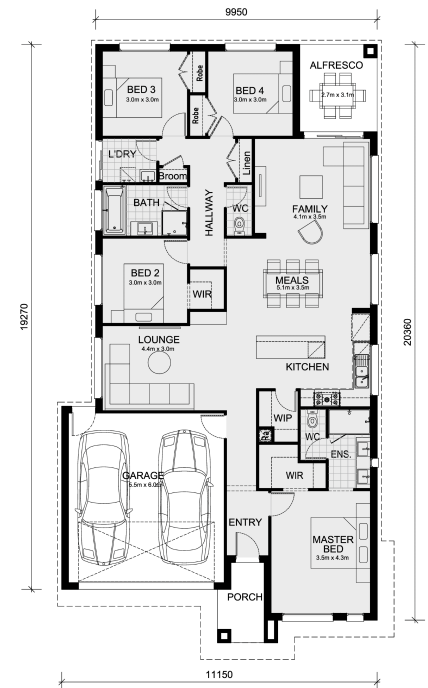
Land Size: 350 m² House Size: 205 m²

The Leemore 221 House and Land Package!

**** Experience The Mimosa Homes Difference****

- Inclusive of site costs & connections with P class slab as per package inclusions!
- Ducted heating & evaporative cooling!
- Home Alarm System!
- Quality floor coverings throughout entire home!
- Higher ceilings 2740mm!
- Double Glazed Windows to entire home!
- Downlights to entire home!
- 40mm Stone bench top to kitchen & 20mm Stone Bench top to Bathroom & En-suite!
- 900mm S/S upright oven and cook top with S/S canopy rangehood!
- Stainless steel Dishwasher, Microwave with trim kit & Undermount Sink to Kitchen!
- Overhead cupboards & wine rack! (Design specific)
- Remote control panel sectional lift garage door!
- 6 star energy with solar hot water!

All plans and facades are indicative concepts only and are not intended to be accurate depictions. Mimosa Homes reserves the right to amend plans specifications and price without notice. Package prices are based on a standard facade, standard inclusions, the availability of suitable land for development and does not include developer/estate requirements. Facade and inclusion images shown may not be standard and may not be included in the price of the home. All dimensions are approximate. Package prices do not include landscaping, fencing, decking, planter boxes, driveways and paths unless specified.



BRAND NEW DESIGN NOT OFF THE PRESS!

\$686,908

Chitraksh Bhargav

E: chitraksh@mimosahomes.com.au

P: 0424447033