



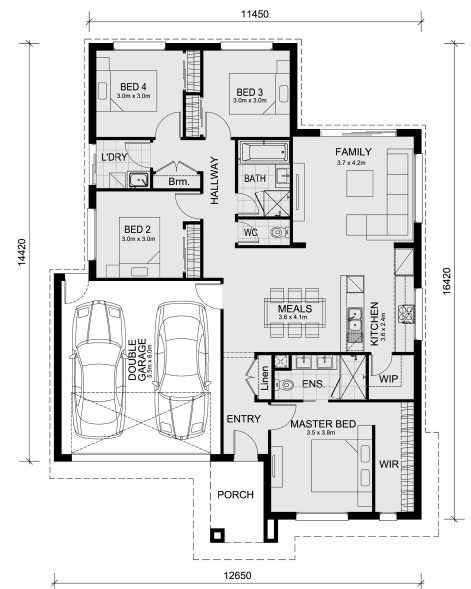
Lot 8504 Camillo Avenue Werribee 3030 VIC

Land Size: 416 m² House Size: 176.5 m²

Mimosa Homes House and Land Package Includes:

Inclusive of site costs & connections with H1 class slab as per standard inclusions! 50 Year Structural Warranty! Quality floor coverings throughout entire home! Higher ceilings 2550mm to ground floor! Double Glazed Awning windows! LED Downlights to entire home! Vitrified Compact Surface benchtop to kitchen, bath & ensuite! 900mm stainless steel dual fuel upright cooker! 900mm stainless steel canopy rangehood vented externally! Stainless steel Dishwasher and Microwave! 7 star energy! Why Harpley, Werribee:

35km Melbourne CBD | 3.5km Werribee CBD | Wyndham Vale Station — 35 min to Southern Cross | St Josephs Catholic | Lollypop Creek P-12 | Harpley Town Centre — Coles & dining open now | 26km trails | Lakes & waterways | All plans and facades are indicative only and may change. Mimosa Homes may amend plans, specifications, and prices without notice. Package prices are based on a standard facade, standard inclusions, and suitable land availability, excluding develop...



\$677,290

Hussain Sabir

E: hussain@mimosahomes.com.au

P: 0411 788 531