



4 2 2

Lot 932 Prairie Road - Banyan Place Officer 3809 VIC

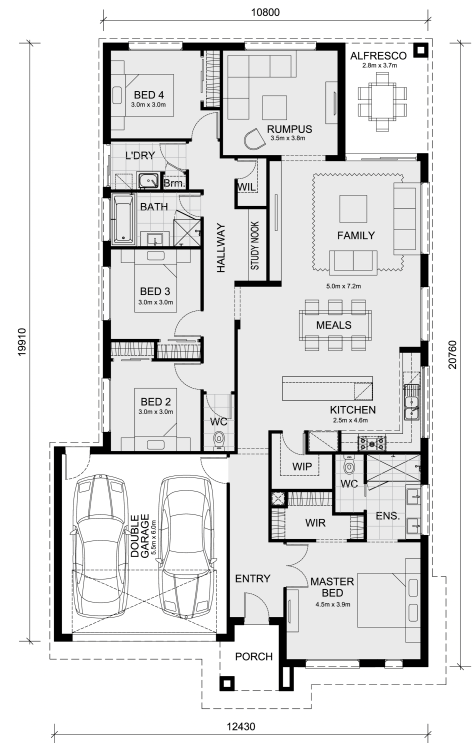
Land Size: 392 m² House Size: 233.4 m²

Incredible Value: Design Your Future with Mimosa Homes.

To inquire, contact Adam at 0439 779 909.

The Armadale 253 and a 392 sqm lot facing north are located in Banyan Place, Officer.

- * Confidence: 50-Year Mimosa Homes Structural Warranty
- * Fixed site costs, including BAL 12.5
- * Timber-look laminate, carpet, and floor tiles
- * 2,550mm high ceilings
- * Stone benchtops—kitchen, ensuite & bathroom
- * 900mm oven, cooktop & range hood (600mm for homes under 20 sq)
- * Microwave with trim kit & dishwasher
- * Semi-floating vanities (double to ensuite) & tiled shower bases
- * Quick-slide robe doors
- * LED downlights throughout, external lights & garage strip light
- * Internal garage access with 2 garage door remotes
- * Flyscreens on windows & obscure-glazing in ensuite & bathroom
- * 7-star energy rating, heating, and hot water unit
- * Concrete flooring in alfresco, with a 3-coat paint system on walls
- * 2 TV points, 2 phone/data points, towel & toilet roll holders included
- * Termite Management System...



\$818,759

Adam Keleher

E: adamk@mimosahomes.com.au

P: 0439 779 909