



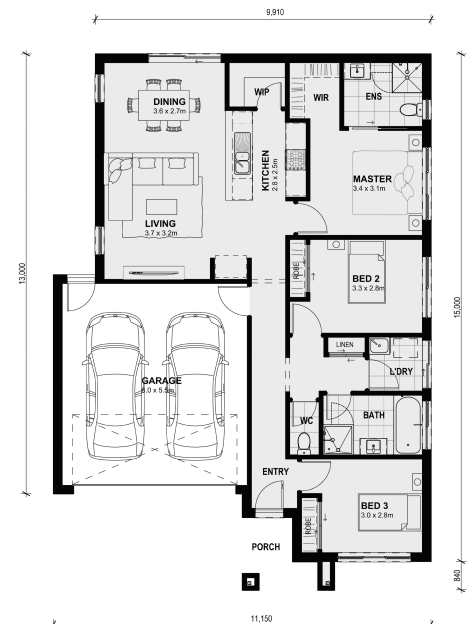
3 2 2

## Lot 947 Wildcherry Street FRASER RISE VIC 3336

**Land Size: 263 m<sup>2</sup> House Size: 150 m<sup>2</sup>**

The combined living, meals and kitchen areas make spending time with family and friends easy in the Boho 161. With two separate bedrooms that share a bathroom located at the front of the home and a large master bedroom with a walk-in wardrobe and ensuite at the rear of the home. The Boho 161 has the ability to fit on smaller blocks whilst not compromising on functionality.

CALL BUILDER DIRECT! 0414 416 828 - Visit our display home at 3-5 Cooma Street Manor Lakes (Manor Lakes Estate)...



# \$594,541

**Jay Yu**

E: [jay@mimosahomes.com.au](mailto:jay@mimosahomes.com.au)

P: 0414416828