



V Glenburn 185

4 bedrooms 2 bathrooms 2 car spaces

Lot1218 #12 Huey Circuit - Canopy Estate CRANBOURNE VIC 3977

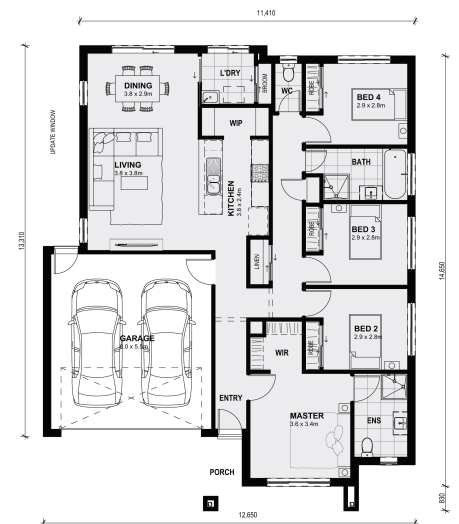
Land Size: 291 m² House Size: 173 m²

With four bedrooms all nestled in one wing of the home and the open kitchen, living and meals area to the other, the Glenburn allows you to entertain family and friends whilst keeping your day-to-day. The Glenburn exceeds the requirements of the modern family in every way.

All plans and facades are indicative concepts only and are not intended to be accurate depictions. Mimosa Homes reserves the right to amend plans specifications and price without notice. Package prices are based on a standard facade, standard inclusions, the availability of suitable land for development and does not include developer/estate requirements. Facade and inclusion images shown may not be standard and may not be included in the price of the home. All dimensions are approximate. Package prices do not include landscaping, fencing, decking, planter boxes, driveways and paths unless specified.

Call Builder Direct; Chris 0435 081 699

...



\$672,000

Chris Prystupa

E: chris@mimosahomes.com.au

P: 0435081699