



3 2 2

Stage 1 Sunrise Estate (Address available on request) DEANSIDE VIC

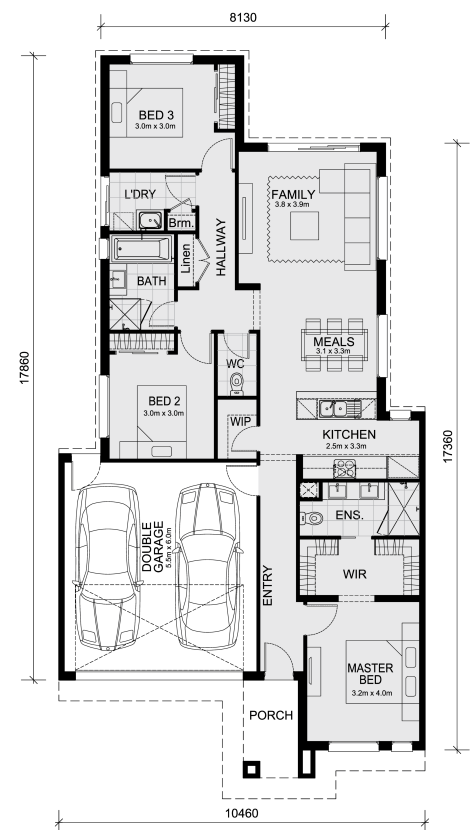
3336

Land Size: 263 m² House Size: 163 m²

- Inclusive of site costs & connections with H1 class slab as per standard inclusions!
- 50-year Structural Warranty!
- Quality floor coverings throughout entire home!
- Higher ceilings 2550mm to ground floor!
- Double Glazed Awning windows!
- Heating and Cooling
- Sliding doors in robes
- LED Downlights to entire home!
- Vitrified Compact Surface benchtop to kitchen, bathroom & ensuite!
- 600mm S/S upright oven and cook top with S/S canopy rangehood!
- Stainless steel Dishwasher and Microwave
- Overhead cupboards to kitchen (Design specific)
- 2000mm High framed shower screen to ensuite & bathroom!
- 7 star energy!
- Flexible floor plans & so much more!

CALL BUILDER DIRECT!

All plans and facades are indicative only and may change. Mimosa Homes may amend plans, specifications, and prices without notice. Package prices are based on a standard facade, standard inclusions, and suitable land availability, excluding developer/estate requirements. Facade and inclusion ima...



\$ 587000

Vikas Khurana

E: vikas@mimosahomes.com.au

P: 0468629991