

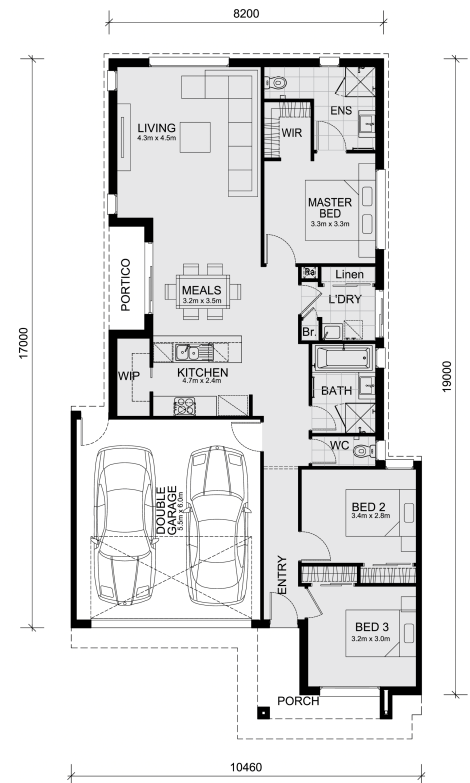


## TITLED TURNKEY 2004 Charlemont Rise Horseshoe Bend Road, Charlemont 3217 VIC Land Size: 385 m<sup>2</sup> House Size: 165 m<sup>2</sup>

Mimosa Homes House and Land Package Includes:

- Inclusive of site costs & connections with H1 class slab as per standard inclusions!
- 50 Year Structural Warranty!
- Quality floor coverings throughout entire home!
- Double Glazed Awning windows!
- 600mm S/S upright oven and cook top with S/S canopy rangehood!
- Pre Priced upgrades and more!
- Driveway, Landscaping, Blinds, Letterbox

Images, facades and floorplans are for illustrative purposes only and may differ from the final product. Mimosa Homes may amend plans, specifications, inclusions and pricing without notice. All V Collection House & Land Packages are subject to a final siting and compliance assessment under the Small Lot Housing Code and relevant design guidelines. Buyers must not purchase land based on this package or information until a Mimosa Homes siting assessment confirms suitability. Additional factors such as PSI reports, site and soil conditions, neighbouring properties, easements and developer or council requirements...



# \$633,834

**Danielle Formosa**

E: [danielle@mimosahomes.com.au](mailto:danielle@mimosahomes.com.au)

P: 0425 544 230