



3 2 2

TITLED TURNKEY 3540 Aspire - Gec Boulevard Fraser Rise 3336 VIC

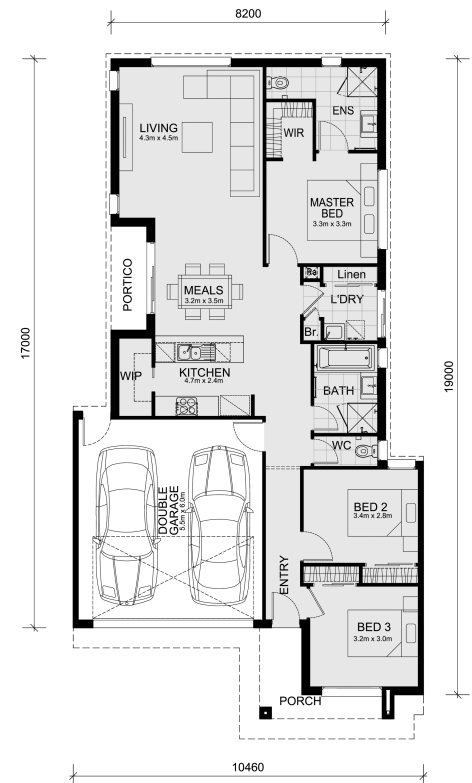
Land Size: 295 m² House Size: 165 m²

Mimosa Homes House and Land Package Includes:

- Inclusive of site costs & connections with H1 class slab as per standard inclusions!
- 50 Year Structural Warranty!
- Quality floor coverings throughout entire home!
- Double Glazed Awning windows!
- 600mm S/S upright oven and cook top with S/S canopy rangehood!
- Pre Priced upgrades and more!

CALL BUILDER DIRECT!

Images, facades and floorplans are for illustrative purposes only and may differ from the final product. Mimosa Homes may amend plans, specifications, inclusions and pricing without notice. All V Collection House & Land Packages are subject to a final siting and compliance assessment under the Small Lot Housing Code and relevant design guidelines. Buyers must not purchase land based on this package or information until a Mimosa Homes siting assessment confirms suitability. Additional factors such as PSI reports, site and soil conditions, neighbouring properties, easements and developer or council requirements may also affect ...



\$612,382

Danielle Formosa

E: danielle@mimosahomes.com.au

P: 0425 544 230